



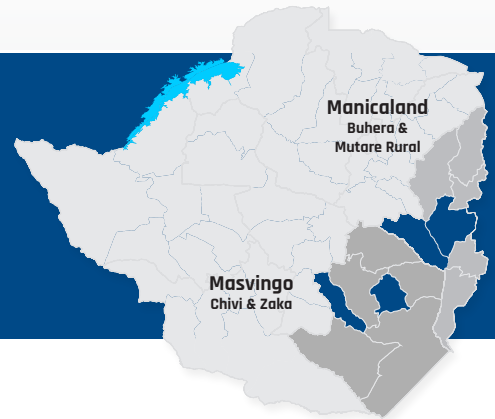
USAID
FROM THE AMERICAN PEOPLE

Takunda

care



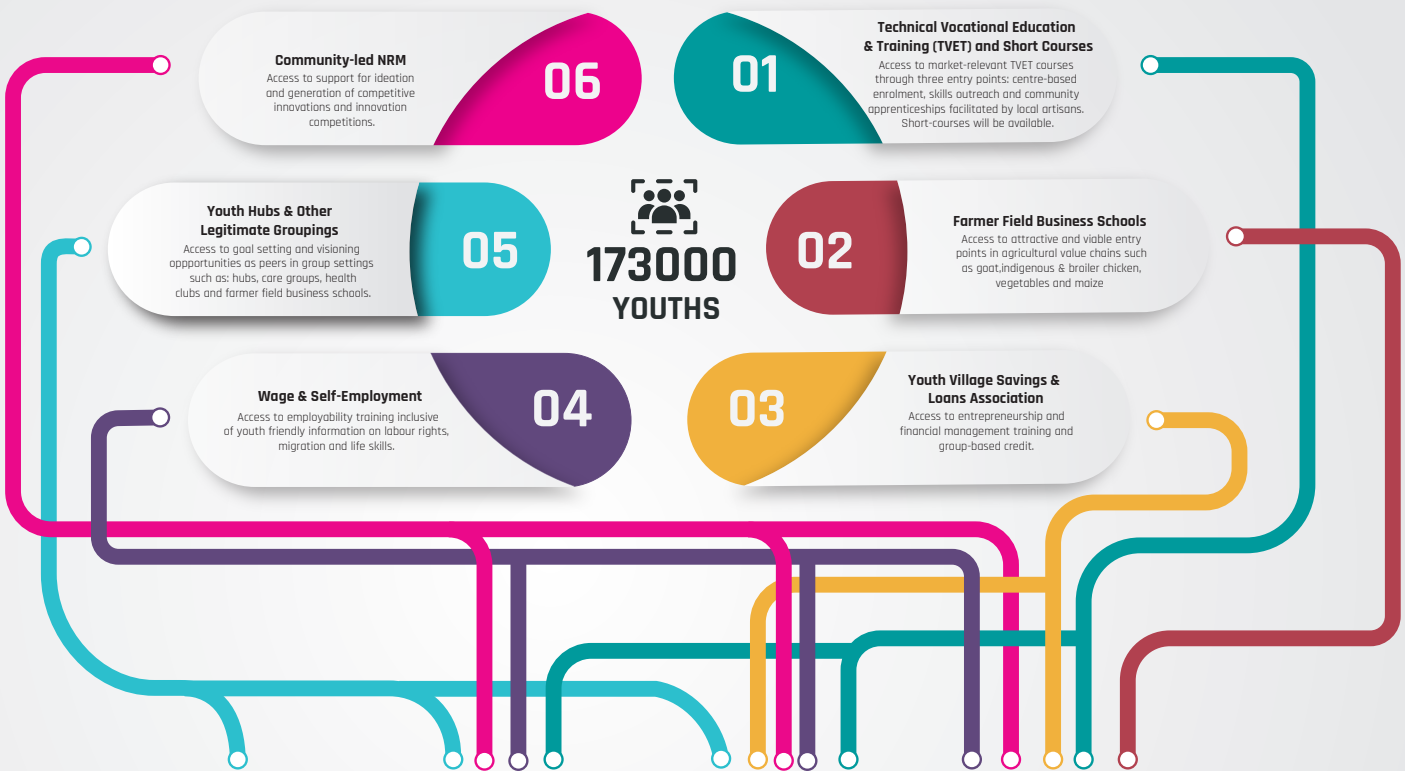
Sustainable, Equitable, and Resilient Food, Nutrition, and Income Security in Manicaland (Buhera and Mutare) and Masvingo (Chivi and Zaka).



YOUTH INTERVENTIONS MODEL

The youth interventions model is informed by consolidated findings from at least six research studies undertaken during the program's 'refine and implementation' year. Through these findings, Takunda's Youth Strategy intentionally streamlines best practices for meaningful youth engagement. Recommendations included fostering **intergenerational partnerships**, **lifeskills training** and **leveraging of existing youth friendly spaces** and **youth champions**. This influenced the program's selection and adoption of **Positive Youth Development**-oriented approaches and interventions.

SIX APPROACHES/INTERVENTIONS



E & OE

10-14 YEARS	15-19 YEARS	15-19 YEARS	20-35 YEARS
<p>57 980</p> <p>53 520</p> <p>*100 000 adolescents will be enrolled into the Passport to Success' training program and gain access to an array of life skills.</p>	<p>Young women, in school, will be encouraged to participate in Youth Innovation & Competitions.</p> <p>Young women, in school, will have access to community based NRM with opportunities to conduct social audits.</p> <p>Young women, in school, will be enrolled in the 'Passport to Success' life skills training program.</p>	<p>Young women, out of school, will be enrolled into Vocational Training Centers and guided by their respective location, level of education, technical orientation and market demand.</p> <p>Young women, out of school, will have access to community based NRM with opportunities to conduct social audits.</p> <p>Young women, out of school, will be enrolled in the 'Passport to Success' life skills training program and access to short courses delivered through youth hubs.</p>	<p>2 500</p> <p>Students will have access to courses delivered by local TVET institutions and their fees will be supported by Takunda.</p> <p>2 000</p> <p>Students will have access to mentorship opportunities delivered by local artisans.</p> <p>3 060</p> <p>Students will be trained through a 'skills outreach' and have access to short courses.</p> <p>% 60</p> <p>A majority of the students are expected to be female.</p>

IMPLEMENTING PARTNERS



Contact: Walter Mwasaa | Chief of Party, Takunda | CARE Zimbabwe | Walter.Mwasaa@care.org | <https://linktr.ee/takundarfsa>