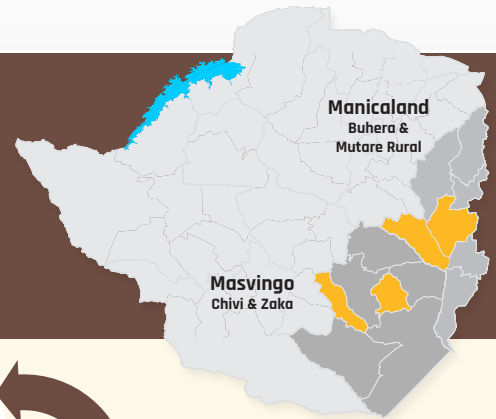
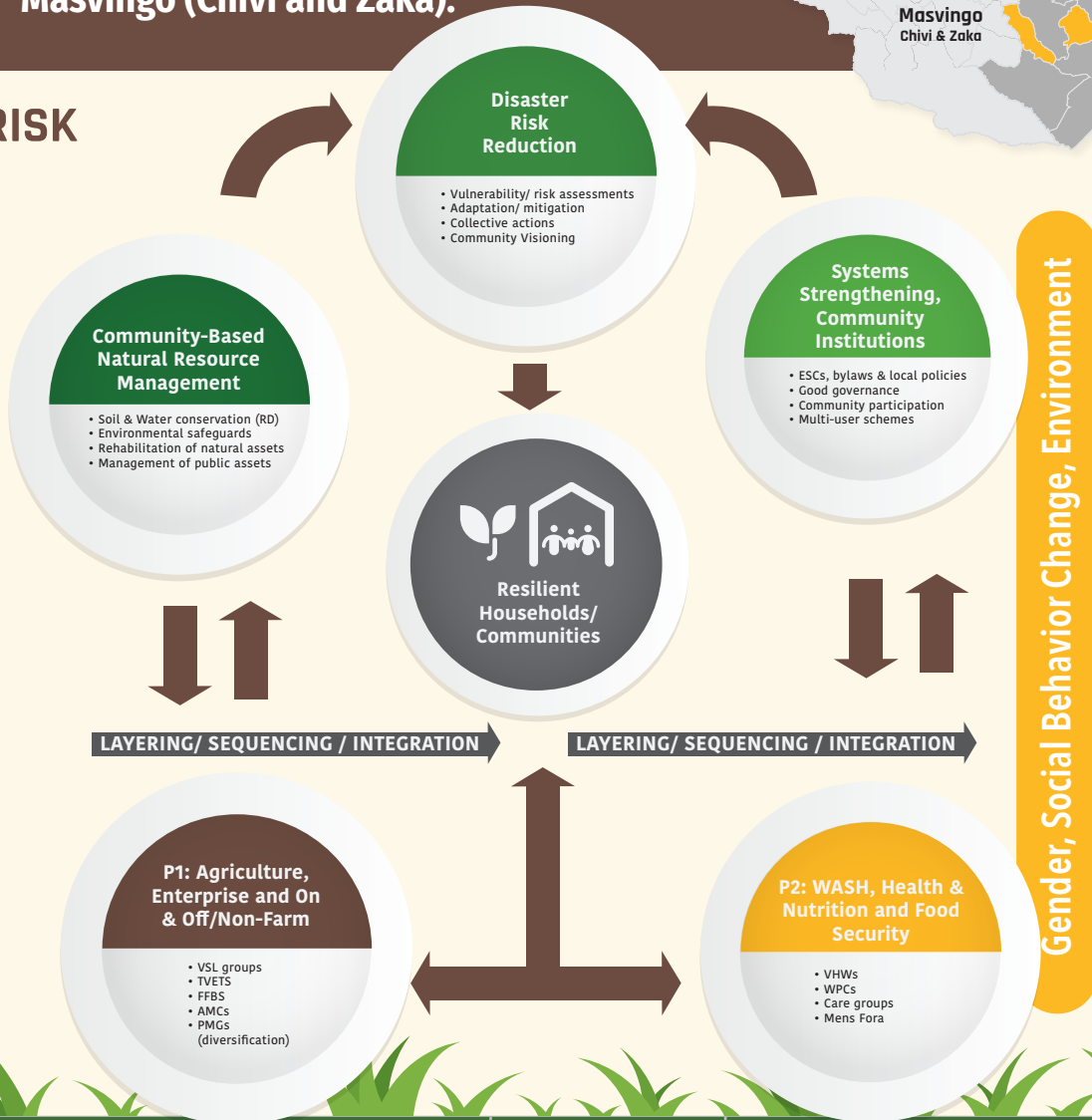




Sustainable, Equitable, and Resilient Food, Nutrition, and Income Security in Manicaland (Buhera and Mutare) and Masvingo (Chivi and Zaka).



DISASTER RISK REDUCTION APPROACH



STRATEGY AREA	KEY INTERVENTIONS	TARGET	DELIVERY MODE	EXPECTED RESULTS
GCVCA	DRR-FPP training	DRR Focal Point Persons	Training of trainers	Increased disaster preparedness
Participatory Scenario Planning	Community Weather Forecasters training	CFWs	Training	Increased anticipatory capacities of communities on weather patterns and early warning systems for decision making
Resilience Design	Resilience Design training	Farmer Field Business School farmers	Training coaching and mentoring	Increased farmers yield and ecosystems strengthening
Community Based Natural Resource Management	CBNRM training including youths	Community members including the youths	Training and competitions	Increased natural resources management and environmental safeguards
CFA	Productive Asset Creation	Communities	Cash for assets	Household food, nutrition and income security increased

IMPLEMENTING PARTNERS

