



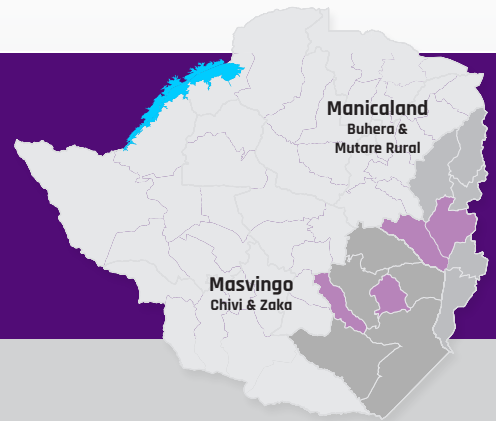
USAID
FROM THE AMERICAN PEOPLE

Takunda

CARE



**Sustainable, Equitable, and Resilient
Food, Nutrition, and Income Security in
Manicaland (Buhera and Mutare) and
Masvingo (Chivi and Zaka).**



**Enterprise
Development**

**Entrepreneurship
Training**

- **Youth Groups, VSLA, Care groups, FFBS, LSPs**
 - Increased income at Household level
 - Diversified Livelihoods options
 - Relevance Enterprises are profitable and able to withstand shocks and stresses
 - Women and Youth access markets and financial services

Off Livelihoods model, Entrepreneurship Manual, H/H Income Tracking booklet, Enterprise maturity index, Feasibility study.

**Business Management
Training**

- **Established Enterprises**
 - Women and Youth Entrepreneurs Capacitated Viable and sustained Enterprises
 - Graduation from IGA to sustainable enterprises
 - Increased income at Household level

Off Livelihoods model, Enterprise Development Manual, H/H Income Tracking booklet, Feasibility study.

**Financial Literacy
Training**

- **Youth Groups, Care groups, FFBS, LSPs**
 - Improved Personal Financial Management at Household level
 - Equity in men's & women's access to and control over financial resources improved
 - Households capacitated with financial literacy and linked to formal financial institutions

Off Livelihoods model, Financial Literacy Manual, H/H Income Tracking booklet.

**Public and
Private Sector
Linkage**

- **Youth Groups, VSLA, Care groups, FFBS, LSPs**
 - Women and Youth have access to employment opportunities
 - Increased access to markets and financial services to support up Enterprise activities.

Private sector Engagement strategy, H/H Income Tracking booklet

IMPLEMENTING PARTNERS



Contact: Walter Mwasaa | Chief of Party, Takunda | CARE Zimbabwe | Walter.Mwasaa@care.org | <https://linktr.ee/takundarfsa>