



**USAID**  
FROM THE AMERICAN PEOPLE

**Takunda**

**care**

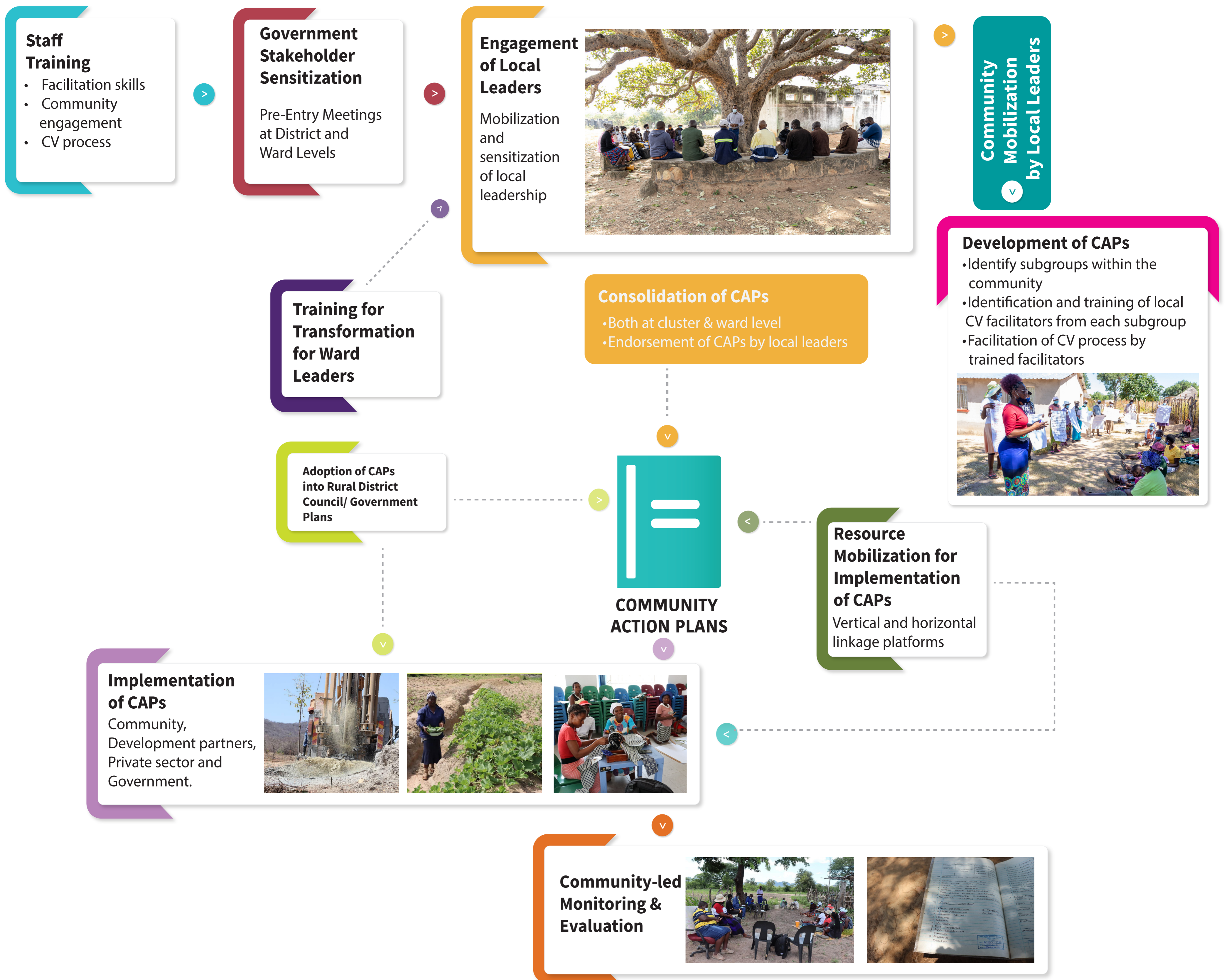


**Sustainable, Equitable, and Resilient Food, Nutrition, and Income Security in Manicaland (Buhera and Mutare) and Masvingo (Chivi and Zaka).**



**COMMUNITY VISIONING**

The flow diagram below illustrates the evolution of the CV process to date.



IMPLEMENTING PARTNERS



Contact: Walter Mwasaa | Chief of Party, Takunda | CARE Zimbabwe | Walter.Mwasaa@care.org | <https://linktr.ee/takundarfsa>